

Conversion

of VZO/VZF meter to a type VZF II

Conversion

VZO/VZF meter to a type VZF II

Each type of Contoil flowmeter VZO/VZOA and VZF (1. Generation), can be upgraded to the flow meter type VZF II (2. Generation).

Dependent on the original type and production time, different components for the upgrade need to be used and probably a reduced functionality will be the result.

There are different upgrade scenarios:

- VZO/A 15-50 (mechanical display. Production date until september 2016)

The hydraulic chamber of the VZO/A until september 2016, have no threaded hole, where the temperature sensor of the VZF II can be connected.

Therefore the temperature sensor of the new VZF II electronic will be put in the head space of the upper part of the measuring chamber.

- VZO/A 15-50 (mechanical display. Production date from october 2016)

The hydraulic chamber of the VZO/A from october 2016, have a threaded hole, where the temperature sensor of the VZF II can be connected.

- VZF/A 15-50 (electronic display, production date until september 2015)

The hydraulic chamber of the VZF/A until september 2016, have no threaded hole, where the temperature sensor of the VZF II can be connected.

Therefore a VZF II electronic, order code 95593, will be used, where the temperature sensor is mounted underneath the electronic.

- VZF/A II 15-50 (electronic display, production date from october 2015)

The hydraulic chamber of the VZF/A from october 2015, have a threaded hole, where the temperature sensor of the VZF II can be connected.

Conversion

VZO/A 15-50 (mechanical display, production date till september 2016)

The hydraulic chamber of the VZO/A until september 2016, has no threaded hole, where the temperature sensor of the VZF II can be connected.

Therefore the temperature sensor of the new VZF II electronic will be put in the head space of the upper part of the measuring chamber.

As a result, some features of the VZF II electronic can not or can only be used partially, like mass calculation and temperature compensation!



VZF II electronic
95588

coupling
95584 – 95587

Dependent on the diameter of the hydraulic part

1. Lose and remove the 4 screws at the upper ring of the VZO/A roller counter. Remove the upper ring incl. the roller counter.
2. Put new coupling with 4 screws on the hydraulic part of the flow meter. The temperature sensor will be put in the head space of the hydraulic part.
3. Connect the temperature sensor to the VZF II electronic.
4. Connect the VZF II electronic with 4 screws to the coupling.
5. Do the programming of the VZF II electronic acc. to manual!

Conversion

VZO/A 15-50 (mechanical display, production date from october 2016)

The hydraulic chamber of the VZO/A from october 2016, has a threaded hole, where the temperature sensor of the VZF II can be connected.



VZF II electronic
95588



coupling
95584 – 95587
Dependent on the diameter of the
hydraulic part



1. Lose and remove the 4 screws at the upper ring of the VZO/A roller counter. Remove the upper ring incl. the roller counter.
2. Put new coupling with 4 screws on the hydraulic part of the flow meter. The temperature sensor will be connected to the treaded hole inside the hydraulic part.
3. Connect the temperature sensor to the VZF II electronic.
4. Connect the VZF II electronic with 4 screws to the coupling.
5. Do the programming of the VZF II electronic acc. to manual!

Conversion

VZF/A 15-50 (electronic display, production date till september 2015)

The hydraulic chamber of the VZF/A until september 2016, has no threaded hole, where the temperature sensor of the VZF II can be connected.

Therefore a VZF II electronic, order code 95593, will be used, where the temperature sensor is mounted underneath the electronic.

As a result, some features of the VZF II electronic can not or can only be used partially, like mass calculation and temperature compensation!

VZF II electronic
95593



Existing coupling of the VZF/A
Will be re used.

1. Lose and remove the 4 screws at the old VZF electronic. Remove the electronic.
2. Put new VZF II electronic on the existing coupling.
3. Do the programming of the VZF II electronic acc. to manual!



Conversion

VZF/A II 15-50 (electronic display, production date from october 2015)

The hydraulic chamber of the VZF/A from october 2015, has a threaded hole, where the temperature sensor of the VZF II can be connected.

VZF II electronic
95588

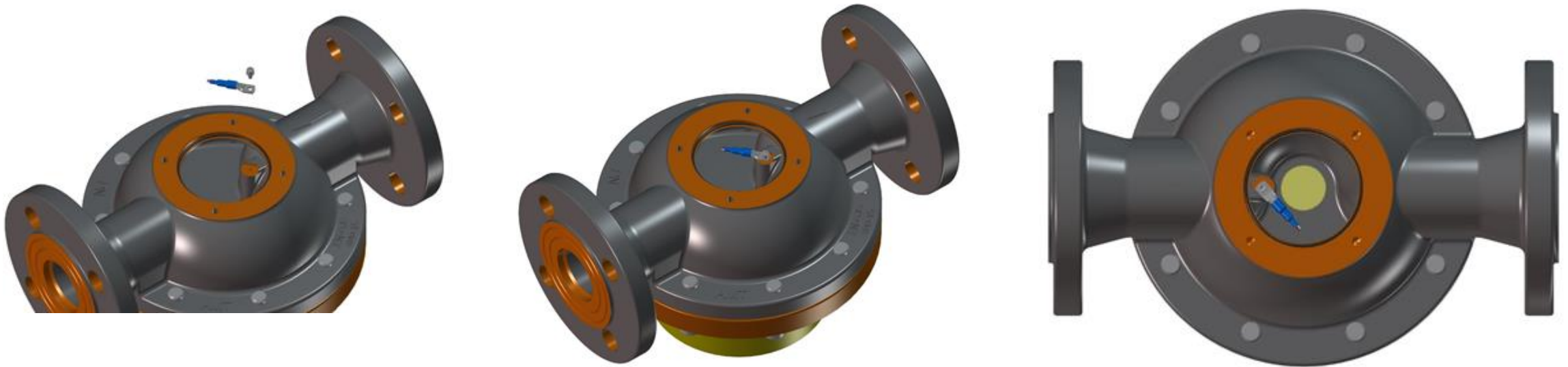


coupling
95584 – 95587
Dependent on the diameter of the
hydraulic part

1. Lose and remove the 4 screws at the old VZF electronic. Remove the electronic and lose the 4 screws of the coupling. Remove old coupling as well.
2. Put new coupling with 4 screws on the hydraulic part of the flow meter. The temperature sensor will be connected to the threaded hole inside the hydraulic part.
3. Connect the temperature sensor to the VZF II electronic.
4. Connect the VZF II electronic with 4 screws to the coupling.
5. Do the programming of the VZF II electronic acc. to manual!

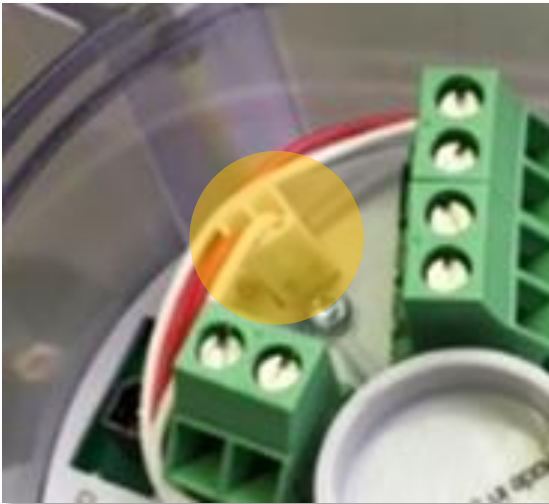
Conversion

Connection of the Pt 1000 temperature sensor to the hydraulic part (if threaded hole is already there!)

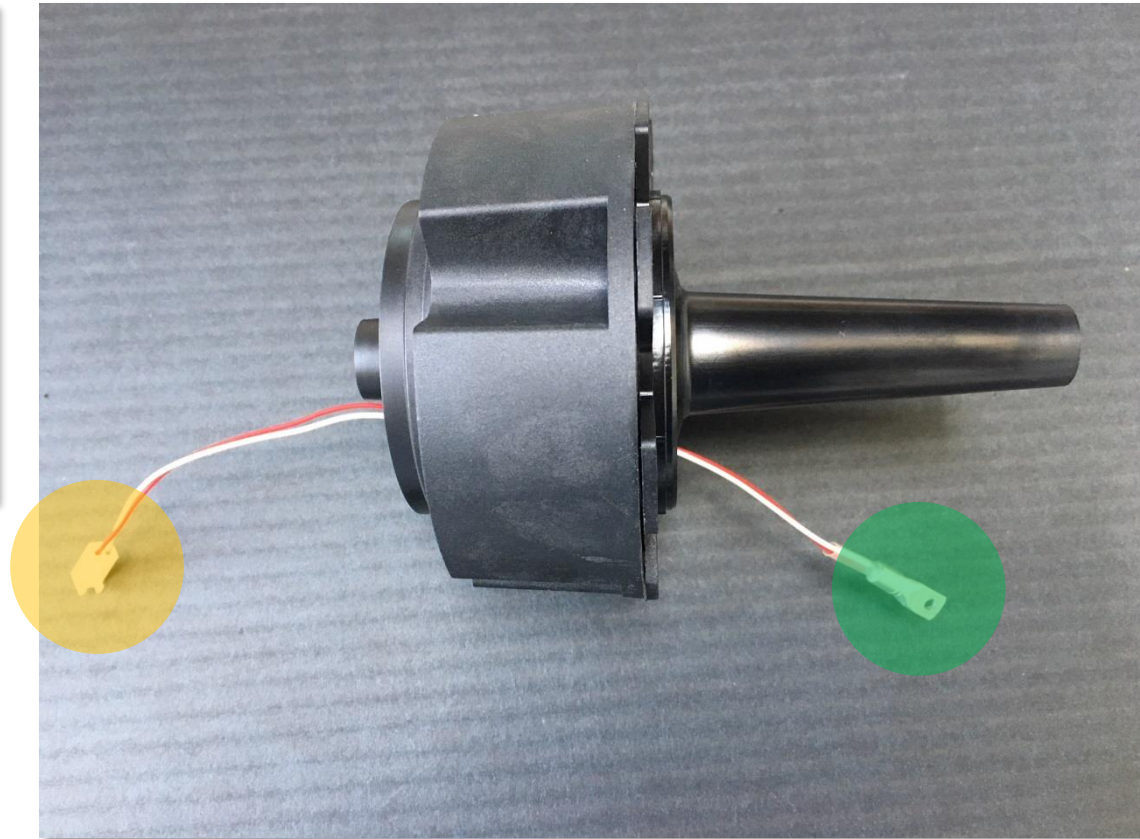


Conversion

Coupling 95584 – 95587 with Pt 1000 temperature sensor



Plug for connection to the electronic 95588



Eyelet to connect the temperature sensor to the threaded hole of the hydraulic part

Conversion

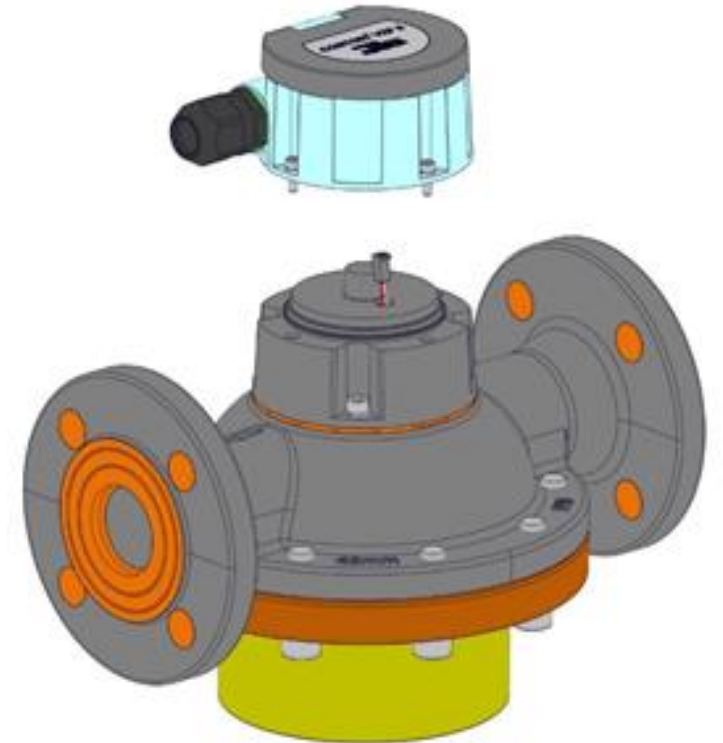
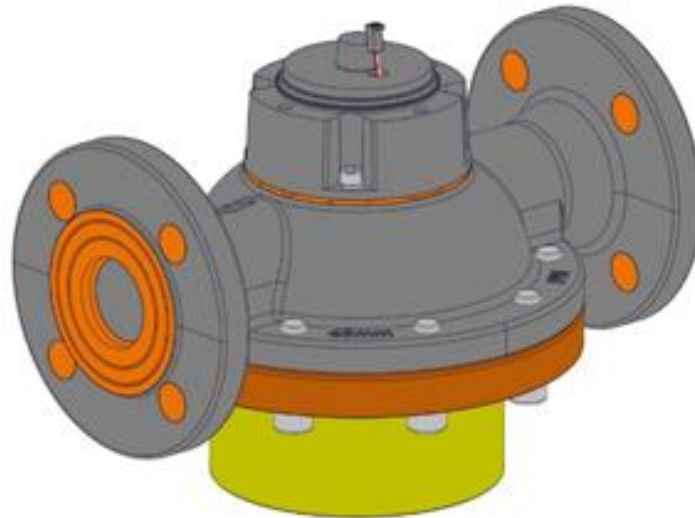
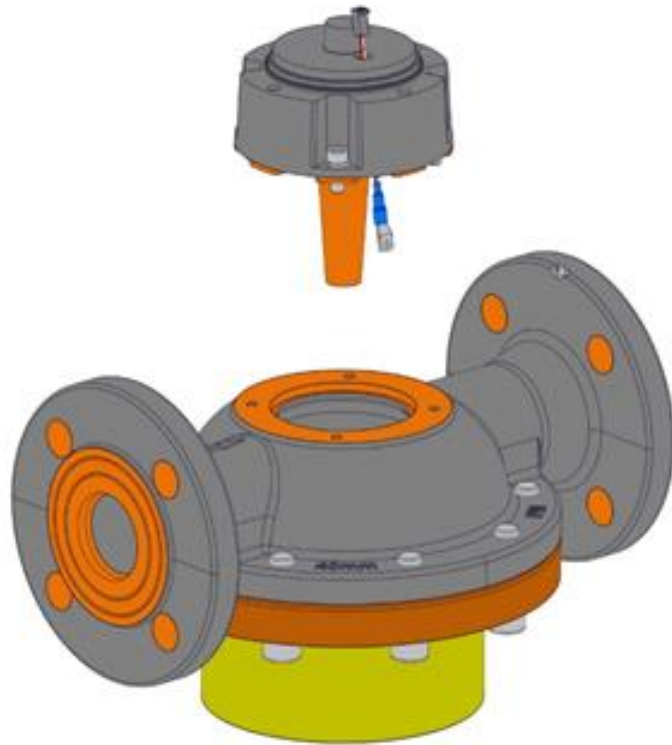


VZF II electronic, order code 95593
eyelet of the temperature sensor
mounted on the electronic



Hydraulic part with threaded
hole for connecting the eyelet of
the temperature sensor.

Conversion



Conversion



Conversion

